



EtG and EtS ON SELECTRA ETG BY LC-MS/MS

LC-MS/MS Conditions

Instrument: Agilent 1200 Binary Pump SL

Detector: AB Sciex API 4000 Q Trap MS/MS

Column: UCT Selectra® ETG HPLC column, 100 x 2.1 mm, 3 µm
(p/n SLETG100ID21-3UM)

Guard Column: UCT Selectra® ETG, 10 x 2.0 mm, 3 µm
(p/n SLETGGDC20-3UM)

Column Temperature: 50 °C

Column Flow Rate: 0.3 mL/min

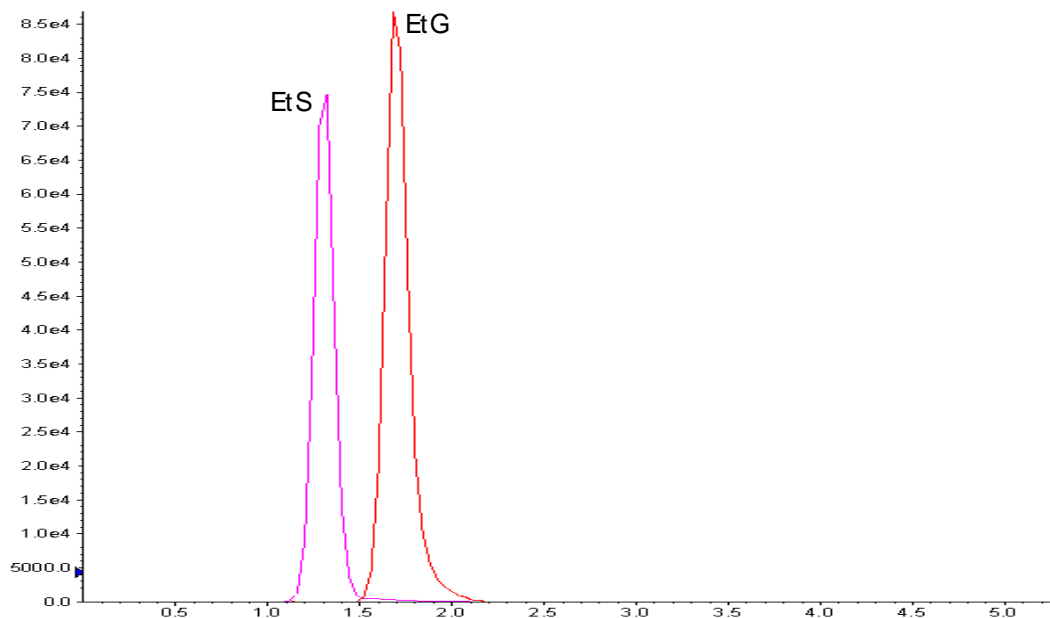
Injection Volume: 10 µL

Mobile Phase A: 0.1% Formic Acid in H₂O

Mobile Phase B: 0.1% Formic Acid in ACN

Gradient Program:

Time (min)	% A
0	100
2.5	100
4.0	5
6.0	5
6.1	100
11.0	100



MRM transitions (ESI ⁻ , 50 ms dwell time)				
Analyte	Rt (min)	Q1 ion	Q3 ion 1	Q3 ion 2
EtS-D5	1.28	130.1	97.8	79.7
EtS	1.31	125.1	95.8	96.9
EtG-D5	1.66	226.1	85.1	74.9
EtG	1.69	220.9	85.1	75.1