



## BASIC DRUGS IN URINE CLEAN SCREEN FAST<sup>®</sup> COLUMN

Part #:

CSFAS203 – CLEAN SCREEN FAST<sup>®</sup> 200 mg, 3 mL Tube

SLDA50ID21-5UM – Selectra<sup>®</sup> DA HPLC Column, 50 x 2.1 mm, 5 μm

### 1. PREPARE SAMPLE:

To 2 mL of urine add internal standard

Adjust pH to 6

### 2. LOAD SAMPLE and SAMPLE DILUTE RATIO:

Sample Dilution Ratio: Sample Volume\* : Diluent\*\* Volume

NOTE: \*If sample is hydrolyzed add appropriate aliquot volume after hydrolysis is complete.

<u>Dilution Ratio</u>	<u>Urine</u>	<u>Diluent**</u>
1:1	500 uL	500 uL
1:4	200 uL	800 uL
1:9	100 uL	900 uL

\*\* Diluent is 50:50 (Methanol: D.I. H<sub>2</sub>O)

Sample and diluents are added in an appropriately labeled tube.

Add appropriate volume internal standard(s). It is recommended to use an internal standard volume of no more than 200 uL.

### 3. EXTRACTION and COLLECTION:

Set up extraction manifold with FAST cartridges and auto-sampler collection vials.

Pour sample into FAST cartridge and elute sample directly into auto-sampler vials.

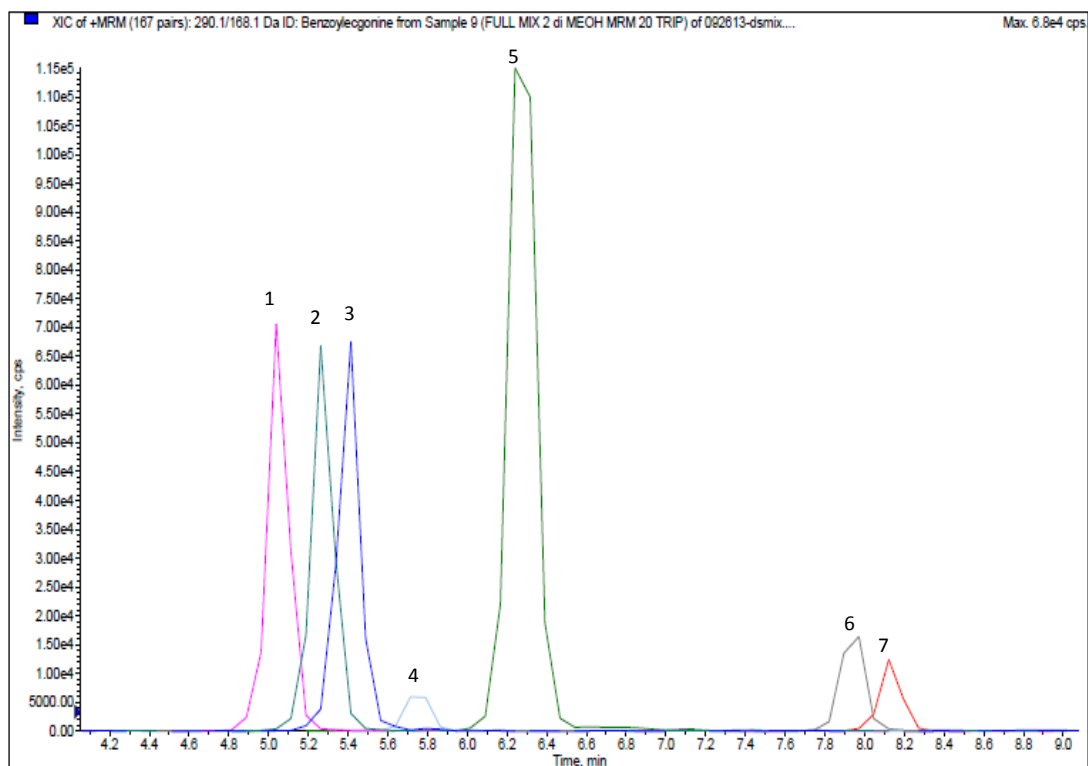
### 4. ANALYSIS:

Cap vials and put directly onto LC/MS for analysis.

# INSTRUMENT CONDITIONS (LC-MS/MS):

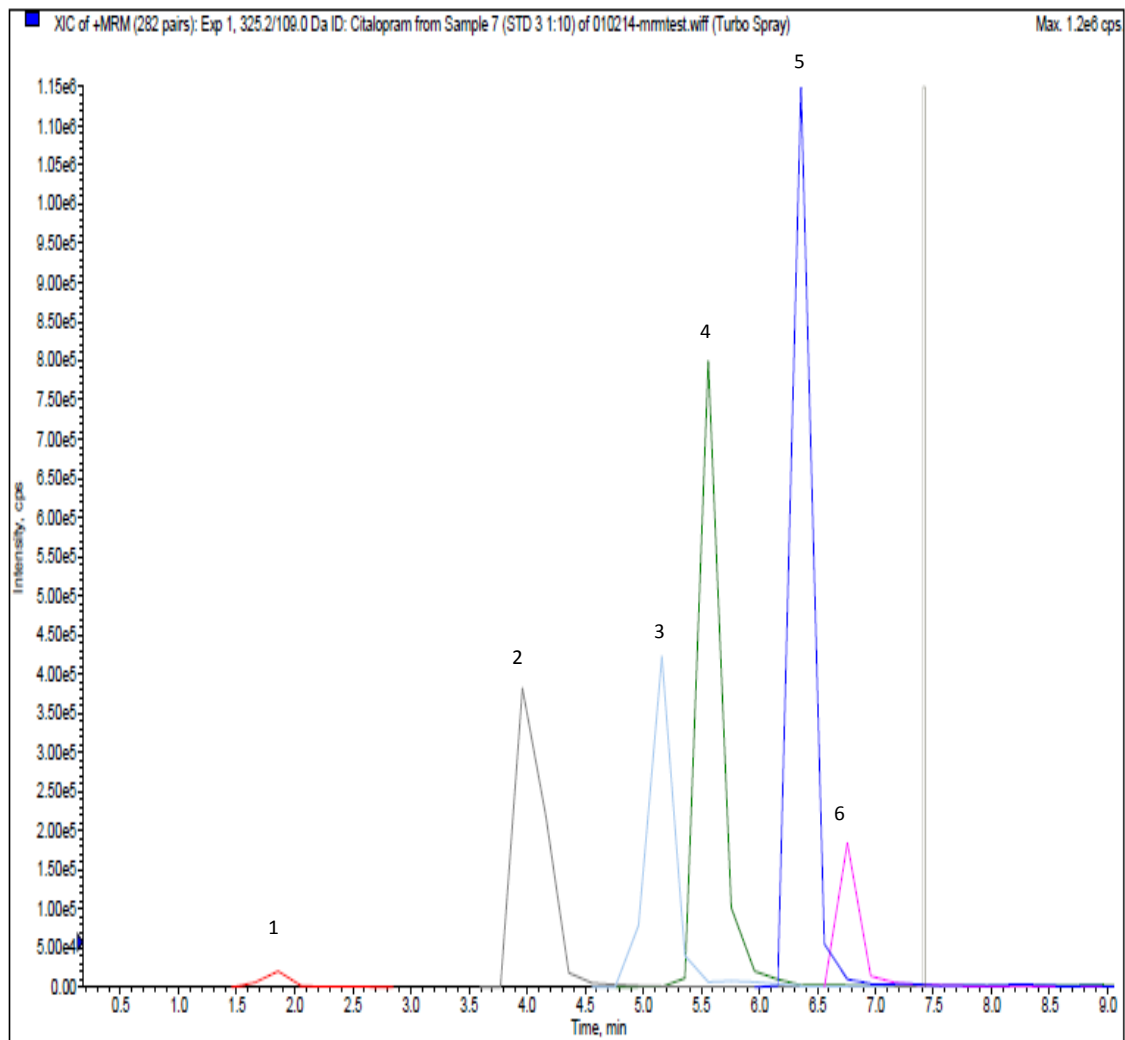
## CHROMATOGRAMS

### Basic Panel 1



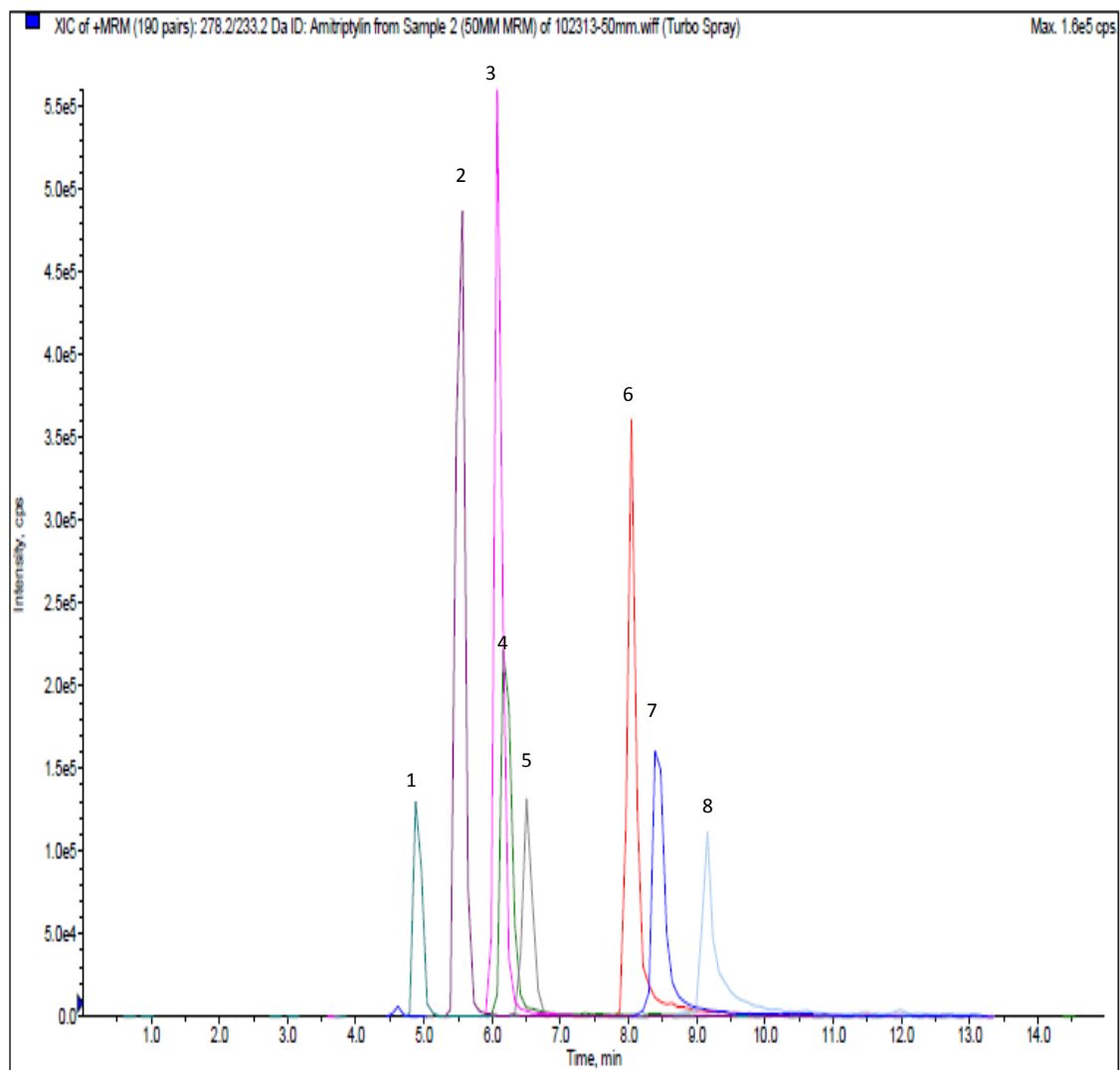
Analyte	MRM Transitions		Relative Retention Time (min)
	Q1	Q3	
1. Tapentadol	222.2	107.2	5.10
2. Tramadol	264.2	58.0	5.25
3. Benzoylcegonine	290.1	168.1	5.40
4. Meperidine	248.2	220.0	5.75
5. Cocaine	304.1	182.1	6.30
6. Fentanyl	337.2	188.2	7.90
7. Buprenorphine	468.3	396.3	8.15

## Basic Panel 2



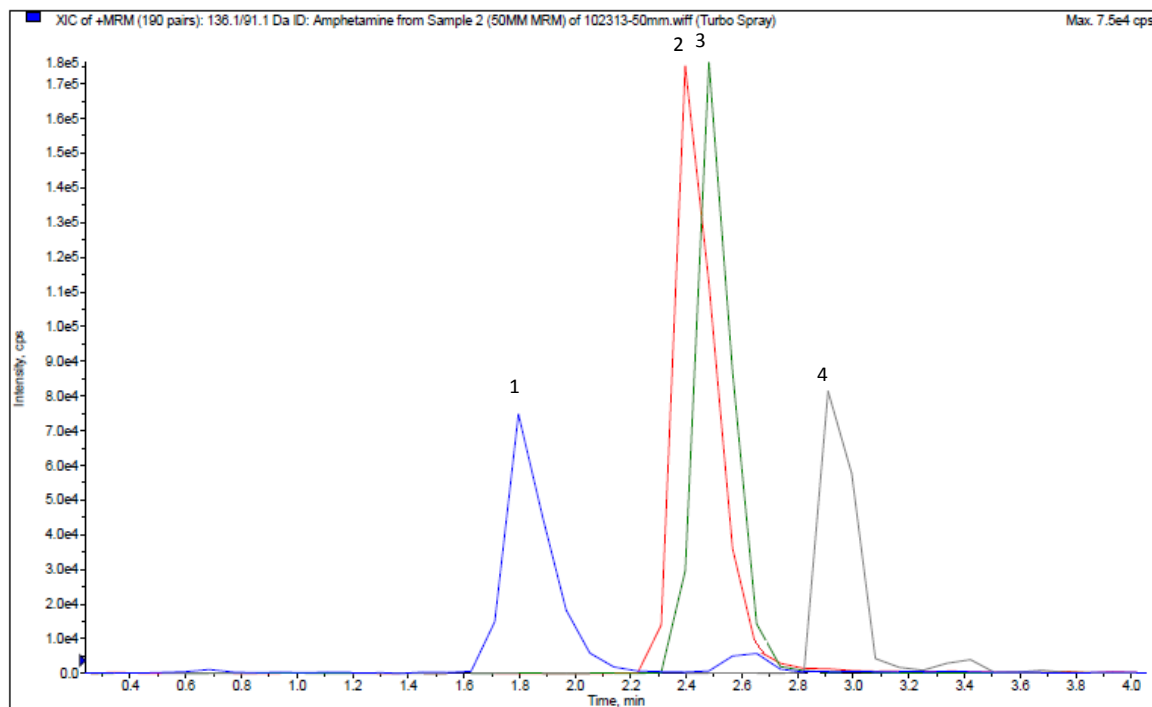
Analyte	MRM Transitions		Relative Retention Time (min)
	Q1	Q3	
1. Clonidine	230.0	213.0	1.80
2. Ketamine	238.1	125.0	4.00
3. Mirtazepine	266.2	195.1	5.10
4. Clozapine	327.1	270.1	5.60
5. Citalopram	325.2	109.0	6.40
6. Norfluoxetine	296.2	134.2	6.80

## Antidepressant Panel



Analyte	MRM Transitions		Relative Retention Time (min)
	Q1	Q3	
1. Venlafaxine	278.2	260.2	4.90
2. Zolpidem	308.2	235.2	5.50
3. Trazadone	372.2	176.1	6.05
4. PCP	244.2	86.1	6.20
5. Quetiapine	384.2	253.1	6.50
6. Imipramine	281.2	86.1	8.40
7. Amitriptyline	278.2	233.2	8.42
8. Sertraline	306.1	159	9.25

## Amphetamine Panel



Analyte	MRM Transitions		Relative Retention Time (min)
	Q1	Q3	
1. Amphetamine	136.1	91.1	1.18
2. Methamphetamine	150.1	91.1	2.40
3. MDA	180.1	105.0	2.45
4. MDMA	194.1	105.1	2.95

### PARAMETERS

**Mobile Phase A:** 0.1% Formic Acid in D.I. H<sub>2</sub>O

**Mobile Phase B:** 0.1% Formic Acid in Methanol

**Flow Rate:** 0.5 mL/minute

**Polarity:** Positive

**Injection Volume:** 20 µL

**LC Column:** Selectra<sup>®</sup> DA HPLC Column 50 x 2.1 mm 5 µm

**Instrument:** API 3200 Qtrap MS/MS with Shimadzu Prominence UFLC

### Gradient:

Time	%A	%B
0.00	80	20
0.50	80	20
12.00	10	90
12.01	80	20
15.00	STOP	